

Community Wealth Building Workshop Series 2022

In partnership with:



Scottish Government
Riaghaltas na h-Alba
gov.scot



EDAS



Economic
Development
Association
Scotland

Open Learning Session #4

Inclusive Ownership

14:00 Welcome and Introduction: Liz McEntee, Chair, EDAS

Special Feature: Anchor Organisations

14:05 Jamilla Hinds-Brough, Mayoral Head of Delivery at Greater London Authority

14:20 Q&A

Session #4: Inclusive Ownership

14:25 Overview: Neil McInroy, Community Wealth Building Adviser to Scottish Government

14:30 Land

Megan MacInnes, Scottish Land Commissioner, Scottish Land Commission

14:40 Q&A

14:45 Employee Ownership

Darah Zahran, Social Economy Manager, Scottish Enterprise

14:55 Q&A

Other Examples of Inclusive Ownership

15:00 Mags McSporran, Head of Social Enterprise Development, Highlands and Islands Enterprise

15:10 Q&A

15:15 Morag Doig, Economic Development Officer, Programmes and Performance, Renfrewshire Council

15:25 Q & A

15:30 Close



SCOTTISH LAND COMMISSION
COIMISEAN FEARAINN NA H-ALBA

Community Wealth Building, Inclusive Ownership & Land

Megan MacInnes
19th April 2022

2020 to 2023



SCOTTISH LAND COMMISSION
COIMISEAN FEARAINN NA H-ALBA

“Guidance on Community Wealth Building and Land”

- **Supporting net zero ambitions and sustainable development**
- **Positive management of land and assets**
- **Productive re-use of land and buildings**
- **Collaboration and partnership**
- **Supporting economic growth and community aspirations**
- **Sharing information**



SCOTTISH LAND COMMISSION
COIMISEAN FEARAINN NA H-ALBA

Land Rights and Responsibilities Statement



Scottish Land Rights and Responsibilities Statement



Along with rights to land come responsibilities ...



SCOTTISH LAND COMMISSION
COIMISEAN FEARAINN NA H-ALBA





SCOTTISH LAND COMMISSION
COIMISEAN FEARAINN NA H-ALBA





SCOTTISH LAND COMMISSION
COIMISEAN FEARAINN NA H-ALBA

Thank You

Keep in touch:

Tel: 01463 423 300

Email: info@landcommission.gov.scot

Website: www.landcommission.gov.scot

Follow us on:



THE ROAD TO 2030: EMPLOYEE OWNERSHIP AND MORE



INCLUSIVE INNOVATION DEVELOPING SE'S INCLUSIVE MODELS PROGRAMME



EDAS 2022

Employee Ownership as a starter for 500

THE EOB FACTS

- EOBs consistently outperform their non EO counterparts in terms of:
 - higher levels of **profitability**,
 - increased **productivity**
 - higher levels of **employee engagement**
 - **improved business resilience** during times of economic crisis.
- The employee ownership sector in Scotland **has grown 13%** since June 2020
- Scotland is the **3rd largest** growth region in the UK (Source: White Rose Centre, June 2021)

Scotland funds the **only service dedicated to supporting business growth** through more employee ownership and co-operative business models

- Awareness Raising – Campaigns & Masterclasses, Case Studies & Testimonials
- Ambassadors - Leaders, Professionals, Partners
- Developing Specialist Adviser Network
- Influencing Business Leaders
- Mentoring & Sharing
- Tools & Tips
- Videos & Podcasts
- Expert Support

- Trusted Network of Advisers
- Guidance and Support
- Best Practice Framework
- Online Content
- UK and Scottish partners (EOA & SfEO)
- Peer to Peer/Champions
- Succession Market
- Expert Support

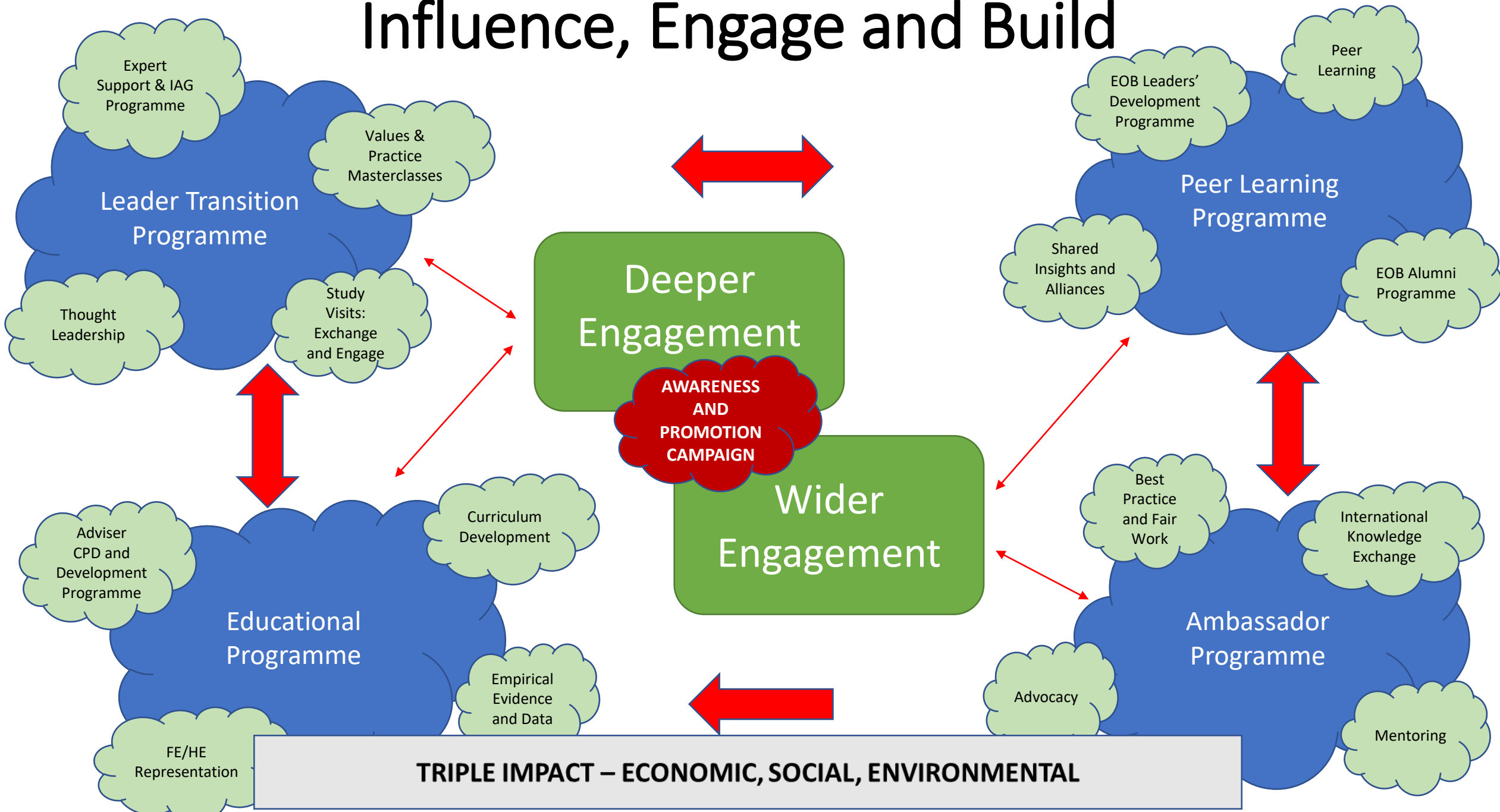
- Stakeholder collaborations (CWB/Fair Work)
- Partnerships across sectors (e.g. manufacturing)
- Cultivating Regional & Local partnerships
- Broaden markets (start up/ young entrepreneurs)
- Eco-system Development
- Associates & Champions

Employee ownership sector in UK and Scotland

- 10-fold increase in successful EOT applications from HMRC across the UK
 20 in 18/19 up to 225 in 20/21
 >20 sales to EOT in Scotland in 2021
- Approx 170 EOBs operating in Scotland
 over 120 are Scottish headquartered companies
- Scottish Government commitment:
 500 EOBs by 2030



Influence, Engage and Build



AWARENESS
EOA
Social & Trade Media
Business Media
12MANY PARTNERS

REGIONAL PARTNERS
HIE & SOSE
Business Gateway
LAED Teams
CWB Champions
City Deal

NATIONAL PARTNERS
EOA
CLES
CeeD
ILGs, Industry & Trade
Bodies

Scottish Enterprise

**co+operative
development
scotland**

**A TEAM SCOTLAND
APPROACH**

EDUCATION & LEARNING
SDS
SFC
HE & FE
SQA (Successor)

ADVISERS
OMs
Adviser Network
Professional Advisers
EOA

INDUSTRY
SfEO
EO Champions
EO Alumni
CAN DO Network
ILG Network

POLICY STAKEHOLDERS
Scottish Government
SfEO
EOA
WEALL
SLAED



Highlands and Islands Enterprise
Iomairt na Gàidhealtachd 's nan Eilean

HELPING TO BUILD A SUCCESSFUL REGION

SINCE 1965

We are the economic and community development agency for the Highlands and Islands of Scotland. We've been working with organisations and communities for over 50 years to ensure the region remains successful and competitive.





LIVE



WORK



STUDY



INVEST



VISIT

About us:

We work in a diverse region which extends from Shetland to Argyll, and from the Outer Hebrides to Moray, covering more than half of Scotland's land mass. We have teams across the region helping communities and businesses to develop and grow. We help people across half of Scotland to build a stronger economy and a better future.

Our vision:

We want the Highlands and Islands to be a prosperous, inclusive and sustainable region, attracting more people to live, work study, invest and visit.

Our priorities:

- Build successful, productive and resilient businesses;
- Enable strong, capable and resourceful communities; and
- Create the conditions for growth and a green recovery.

Who we work with



BUSINESSES

We offer a range of support including advice, events, funding and property to help develop and grow your business.



COMMUNITIES

We support communities across our dispersed region, recognising the pivotal role that strong, resilient and capable communities play in the overall success of our economy.



SOCIAL ENTERPRISES

We have a close working relationship with around 150 social enterprises across the Highlands and Islands through our account management approach.



Inclusive Ownership – the current state of play

- **HIE currently works directly with circa 150 entities of varying legal forms:**
 - **Community Enterprises**
 - **Co-operatives**
 - **Employee Ownership**
 - **Social Enterprises**

We enable communities to contribute to the social and economic wellbeing and growth of the region.

Inclusive Ownership – Community Development



[https://www.hie.co.uk/
our-
region/casestudies/pap
ay-development-trust/](https://www.hie.co.uk/our-region/casestudies/papay-development-trust/)

We enable communities to contribute to the social and economic wellbeing and growth of the region.

Inclusive Ownership – Community Energy



<https://www.hie.co.uk/our-region/casestudies/soirbheas/>

<https://www.youtube.com/watch?v=oxdJp4bZ37A&t=3s>

We enable communities to contribute to the social and economic wellbeing and growth of the region.

Inclusive Ownership – Community Land Ownership Enterprise



<https://www.hie.co.uk/our-region/casestudies/westharristrust/>

We enable communities to contribute to the social and economic wellbeing and growth of the region.

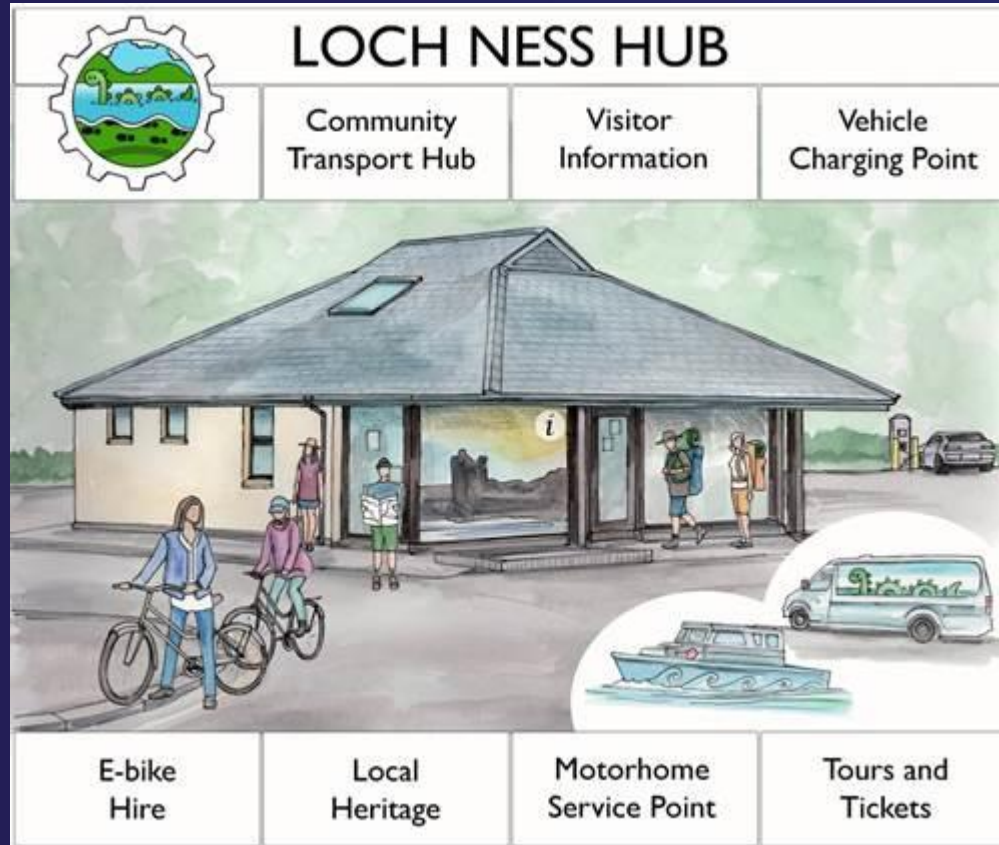
Inclusive Ownership – Community Co-operative



https://www.harriscommunityshop.co.uk/index.php/about_us/about_us

We enable communities to contribute to the social and economic wellbeing and growth of the region.

Inclusive Ownership – Social Enterprise



<https://www.hie.co.uk/our-region/casestudies/lochnesshub/>

We enable communities to contribute to the social and economic wellbeing and growth of the region.



Inclusive Ownership – Challenges

- Capacity - time
- Access to finance
- Preconceptions of social enterprise

We enable communities to contribute to the social and economic wellbeing and growth of the region.



Inclusive Ownership – Where we are headed

- More socially based businesses
- Opportunities
 - Succession
 - Supply chains – Tourism, Food and Drink, emerging sectors
 - Public sector procurement

We enable communities to contribute to the social and economic wellbeing and growth of the region.



Find out more about how we work with communities
at www.hie.co.uk/communitydevelopment

Meet some of the fantastic communities we work
with at www.hie.co.uk/remarkablecommunities

Find out about #GoPlaces
www.hie.co.uk/goplaces

Find out how we are supporting net zero transition at
www.hie.co.uk/netzero

And follow us on social media:

[Twitter](#) : [Facebook](#) : [Linkedin](#) : [Instagram](#)

A photograph of a city street with a brick wall on the left and a road with parked cars on the right. A white sign with a black border and four black dots in the corners is overlaid on the bottom half of the image. The sign contains the text 'START-UP STREET' in a bold, black, sans-serif font. The background shows a paved sidewalk, a road with a white line, and several vehicles including a blue van, a silver car, a white van, and a red car. Buildings are visible in the distance.

START-UP STREET



**Renfrewshire
Council**

New business model for subsidised and shared accommodation. For “Start-Up Street” the Economic Development Team take run down and unused retail and office units in the heart of our Town Centres and transform them into business incubator hubs offering 2 year rent reducing subsidies for small businesses to grow and develop.

Aim of Start-Up Street: create an entrepreneurial eco-system which will support the creation and growth of new and diverse businesses in Renfrewshire.





Businesses at Start Up Street can rent their first commercial space for up to two years, with lease costs incrementally increased until they are ready to move to an alternative commercial space in Renfrewshire.

Costs cover the workspace, Wi-Fi, utility bills and provide access to meeting rooms, while there's also one-to-one guidance, mentoring, workshops, masterclasses and support from an Enterprise Manager who is based on site and from the Council's Business Gateway team.

START-UP STREET

- Renfrewshire Council surveyed local business Start-Ups.
- Survey found more than 80% of new businesses locally were looking for subsidised space to grow.
- Barriers to growth were cited as high costs and a lack of know-how and confidence in taking the next steps.
- Start-Up Street is part of a wider economic development support package for local business which includes; InCube Programme, Creative Hubs Model, InCube Shop, Business Gateway Services and Enterprise and Employability services.

START-UP STREET

- Vacant Council premises (more than 5 years) in a state of dilapidation.
- Refurbished using Town Centre Regeneration Fund and Economic Development budget.
- Each of the models will have a third sector partner managing the facility, keeping the resources local and building capacity in the third sector.
- Focus on long –term economic benefits for Renfrewshire, no financial gain for Council.
- Themed to support areas showing opportunity for growth- Youth Enterprise (Paisley), Female Led Enterprise (Renfrew), Community Well-being focus (Johnstone).

Johnstone

Station Seven is a community asset transfer of the old Johnstone police station building to Active Communities.

In Johnstone, the Start-Up Street facilities will focus on supporting health and wellbeing businesses and form part of the new Station Seven premises, with businesses able to work with community groups and people using its facilities.





More Info

Start-Up Street Paisley

Start-Up Street Johnstone

Start-Up Street Renfrew

If you'd like to know more about Start-Up Street, contact us by email to

morag.doig@renfrewshire.gov.uk

