

Working for Fife - Is your Town Ready for Community Wealth Building?

Wednesday 19th November 2025

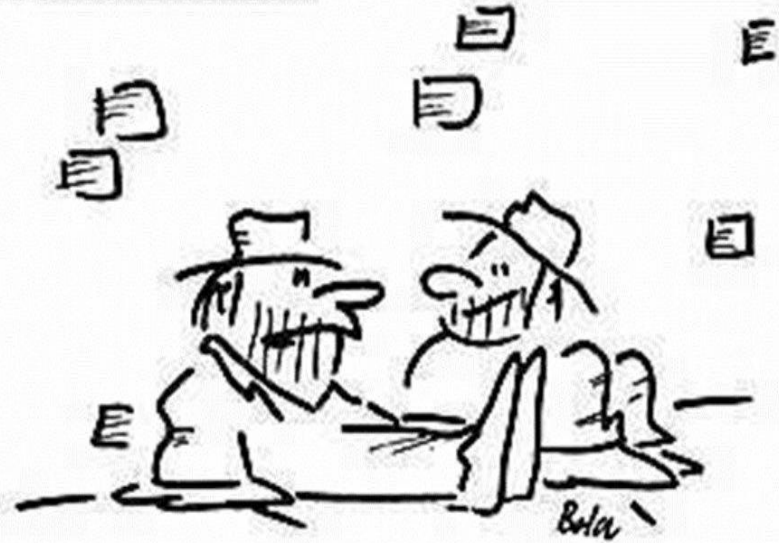
Alan Paul

OurFife
successful · confident · fairer

Community wealth building is about creating a fairer, more socially just economy.

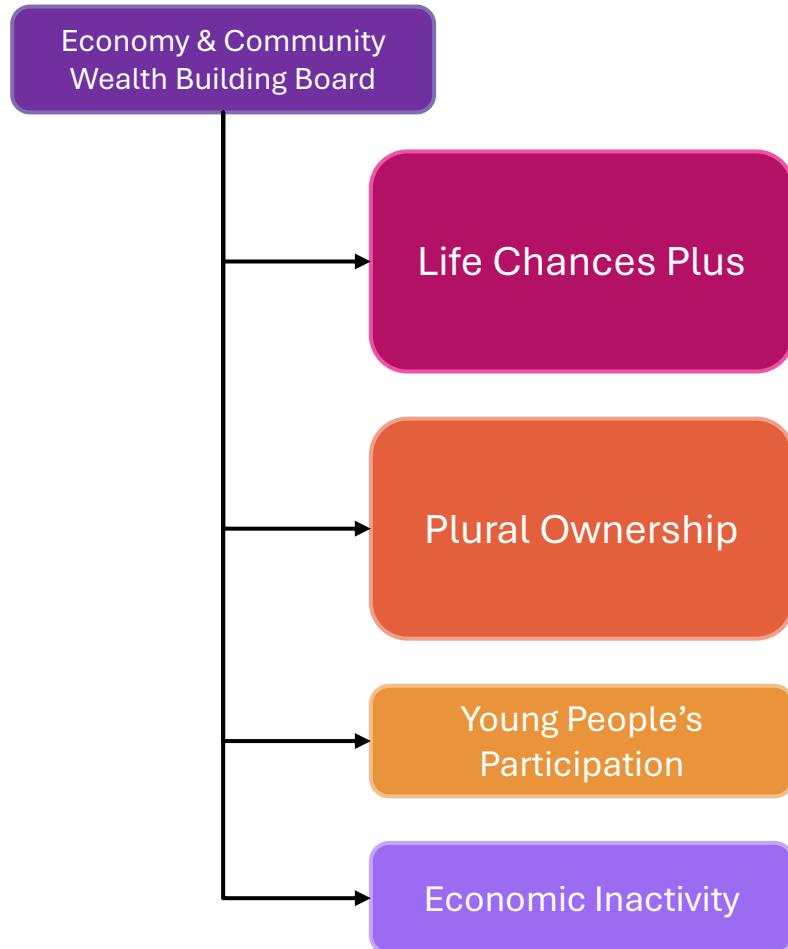
Transform the economy *by design*.

© Original Artist
Reproduction rights obtainable from
www.CartoonStock.com



"When it came to trickle-down economics,
I turned out to be water-resistant."

Areas of Focus and Collaboration



▶ **Life Chances Plus**

- ▶ To expand the Life Chances model; increasing the number of placements and introducing in-work progression pathways to support people to become higher skilled and higher paid.

▶ **Plural Ownership**

- ▶ To develop a vision for plural ownership of the economy in Fife and make recommendations to the Board on opportunities and next steps.

Successes - Workforce

Life Chances progressive approach to recruitment

- ▶ 13-week paid placement in Fife Council and public and third sector partners
- ▶ Aimed at reducing socio-economic disadvantaged through progressive recruitment
- ▶ Employability support during and post-placement
- ▶ Changing council systems, culture and processes
- ▶ Now a mainstreamed approach to council recruitment for hard to fill vacancies



The 'Life Chances' alternative approach to recruitment allows services to provide a paid placement to a person on the employability pathway.

The participant will be 'ready for work' but will require support during the placement as they will be likely to have limited work experience due to their personal circumstances.

Participants will be offered a guaranteed job on successful completion of the placement.

 Life Chances Recruitment Process for Managers

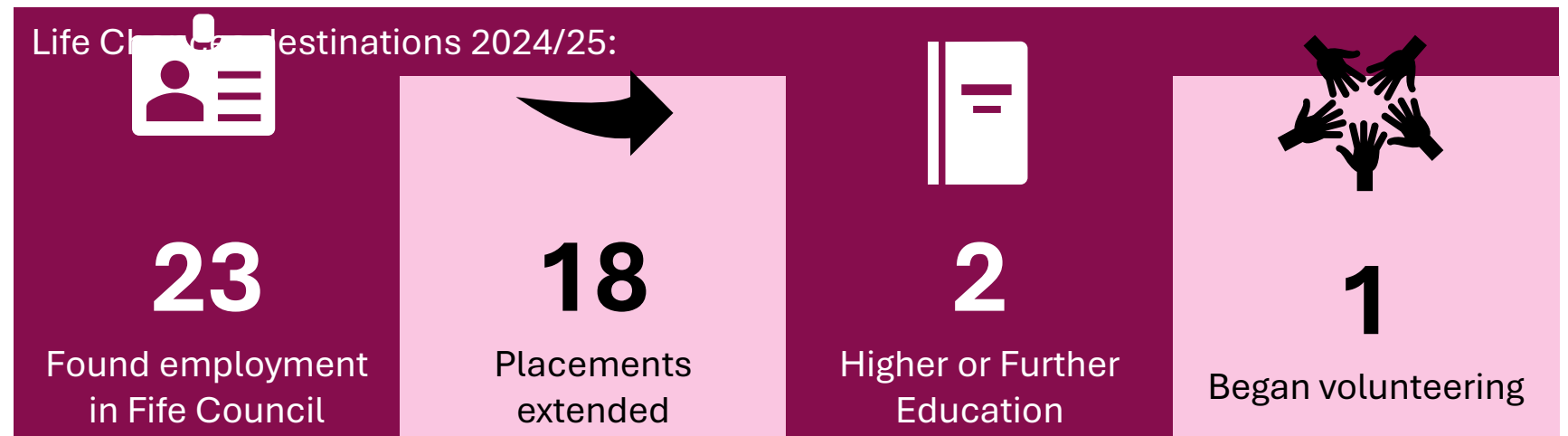
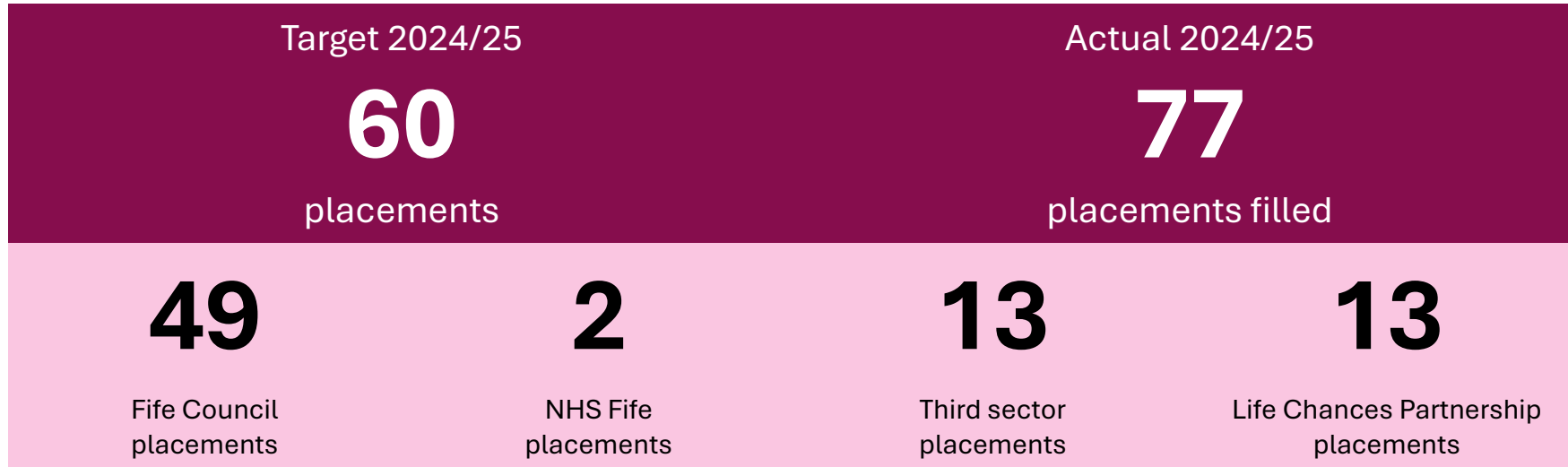
 Alternatives to Recruitment

 Recruitment top tips

“I felt lost and unsure of how to get myself out of the hole I had gotten myself into. I had forgotten who I was and needed a push in the right direction. When my support worker told me about this opportunity, I felt this was a good chance to get myself back into the world. Being on the placement has brought me stability, I’ve made new friends, and I feel like I’ve found myself again.”

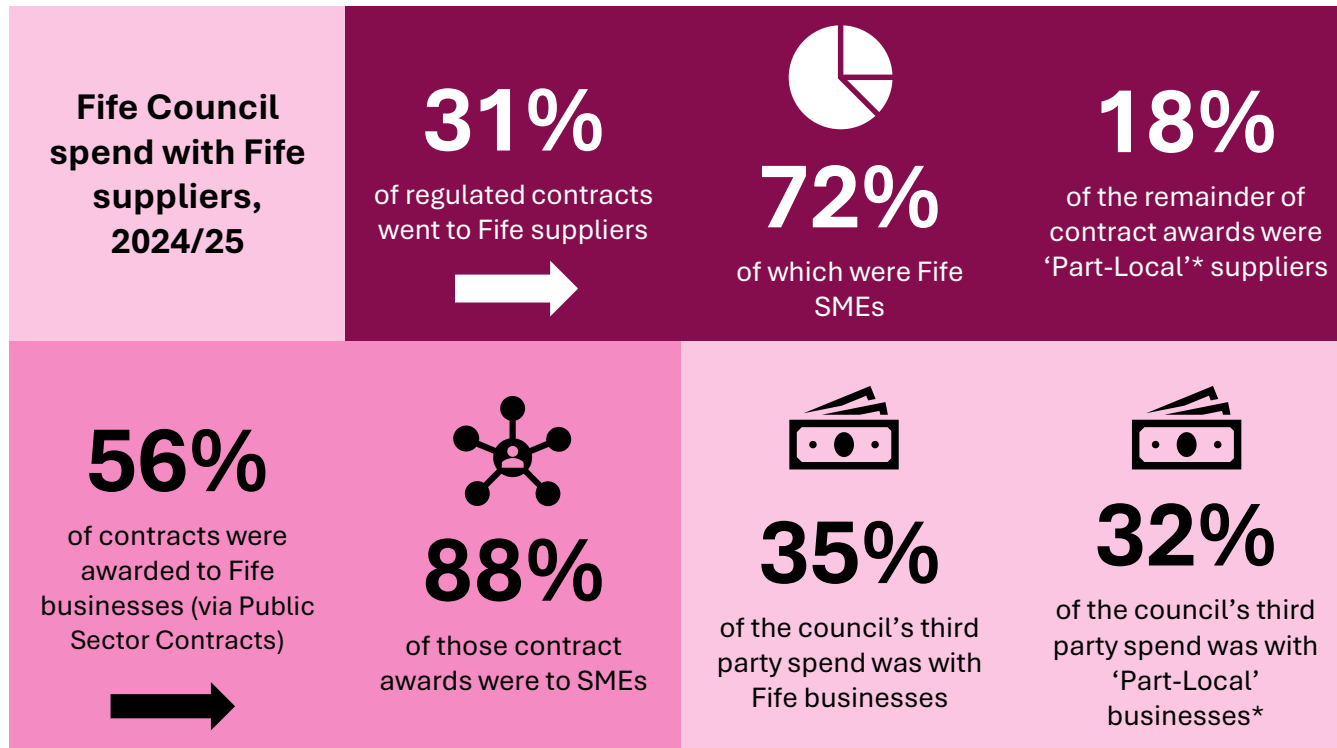
Life Chances Participant supported by Fife
Gingerbread

Life Chances progressive approach to recruitment



Successes - Spending

► Supporting local SMEs and businesses

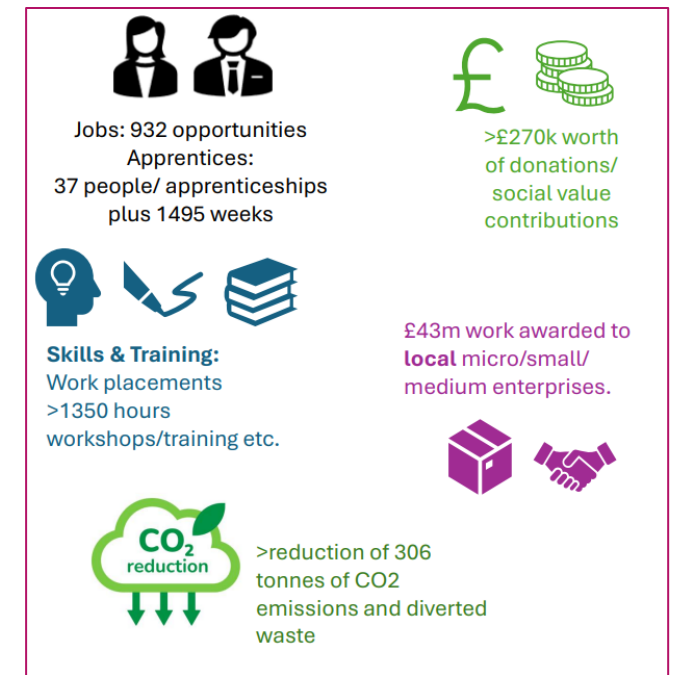


Successes – Spending & Procurement

► Community Benefits

148 of the 261 regulated contracts awarded during the reporting period included community benefit requirements in 2024/25

- **Friends of Craigtoun** (North East Fife Area) requested support to replace the workshop roof.
- **Glenrothes Camera Club** (Glenrothes Area) requested a donation of a laptop.
- **Kirkcaldy Parks Running Festival** (Kirkcaldy Area) requested financial support/sponsorship.
- **Headwell Community Council** (City of Dunfermline Area) requested benches and planters.
- **CLEAR Buckhaven and Methil** (Levenmouth Area) requested a financial donation to support the purchase of plants and garden/litter picking tools.
- **EATS Rosyth** (South & West Fife Area) requested financial donation to support its community larder.
- **Lo'gelly Lunches** (Cowdenbeath Area) requested financial donations and transit van hire.



Successes - Spending

Award winning Dunfermline Learning Campus for Social Value / Community Benefits



Dunfermline Learning Campus

Community Benefit Highlights

Main Contractor: BAM (via Hub East Central Scotland)
Contract Value: £112m

£21.36m work awarded to **local** micro/small/ medium enterprises.



- 284 hours of School/College Visits
- >733 weeks' worth of training opportunities
- 8 weeks work placements
- 6 Site Visits for school children/ colleges/ local residents



- 74 hours expert business advice to Third Sector organisations/SMEs in the supply chain
- 96 voluntary hours to Third Sector Organisations
- 100 volunteering hours dedicated to creation or management of green infrastructure



Jobs/Employment Opportunities

- >12 **local** people employed on contract (2.45 of these were previously long-term unemployed)
- >56 employed via supply chain)
- 13 weeks Graduate employment opportunity
- 467 apprenticeship weeks

Positive Environment Legacy



On Friday 17 May Kris Moir and Martin Cooper were invited to Dulloch Park in Fife by Calais Wood Conservation Group to the official opening of their active community hub.

Through our social impact activities on WSC the team and project supported a much-needed resource for 7 community groups in the Fife Area. The team carried out enabling and remedial works, in preparation for our donation of 1x portacabin with the local authority donating another portacabin to support what is now a thriving community hub within the Fife locality.

There are several local groups using the cabins:

- Calais Wood Conservation Group (wildlife and environment)
- Dulloch in Bloom (gardening and horticulture)
- Calais Wood Wombles (litter picking and environment)
- Dulloch Path Group (path network maintenance)
- Falling Up Together (art and well being)
- Halbeath and Dulloch Community Council
- South Dunfermline Community Council

Furthermore, we learned that the groups can now better function and have full visibility within this community offering numerous communities support that helps to increase and enhance environmental awareness, support those with mental health matters, as well as offering engagements that are educational, creative, and supporting experiences for local people, educational and community provisions.

We look forward to further extending our support as we continue our work within the Fife area.

To see what the local groups said see the video on the QR link below or visit: <https://youtu.be/Q2Hw-s8UC2>



Woodmill & St Columba's High School - Social Value Case Studies

[Dunfermline Learning Campus](#) (Drone Footage)

Priorities for 2026 & Beyond



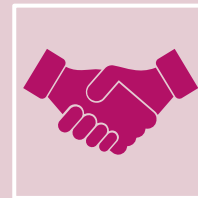
Consolidate to achieve greater scale and impact – grow Life Chances+, improve approaches to procurement, develop local supply chains/key sectors and deepen collaborative approaches



Build the CWB pipeline - consistency of approach (and tools) to include developing a whole town approach to CWB for regeneration of Kirkcaldy



Better and more consistent measurement of benefits – balanced scorecard, use of SVP, case studies



Clear investible narrative aligned to national priorities